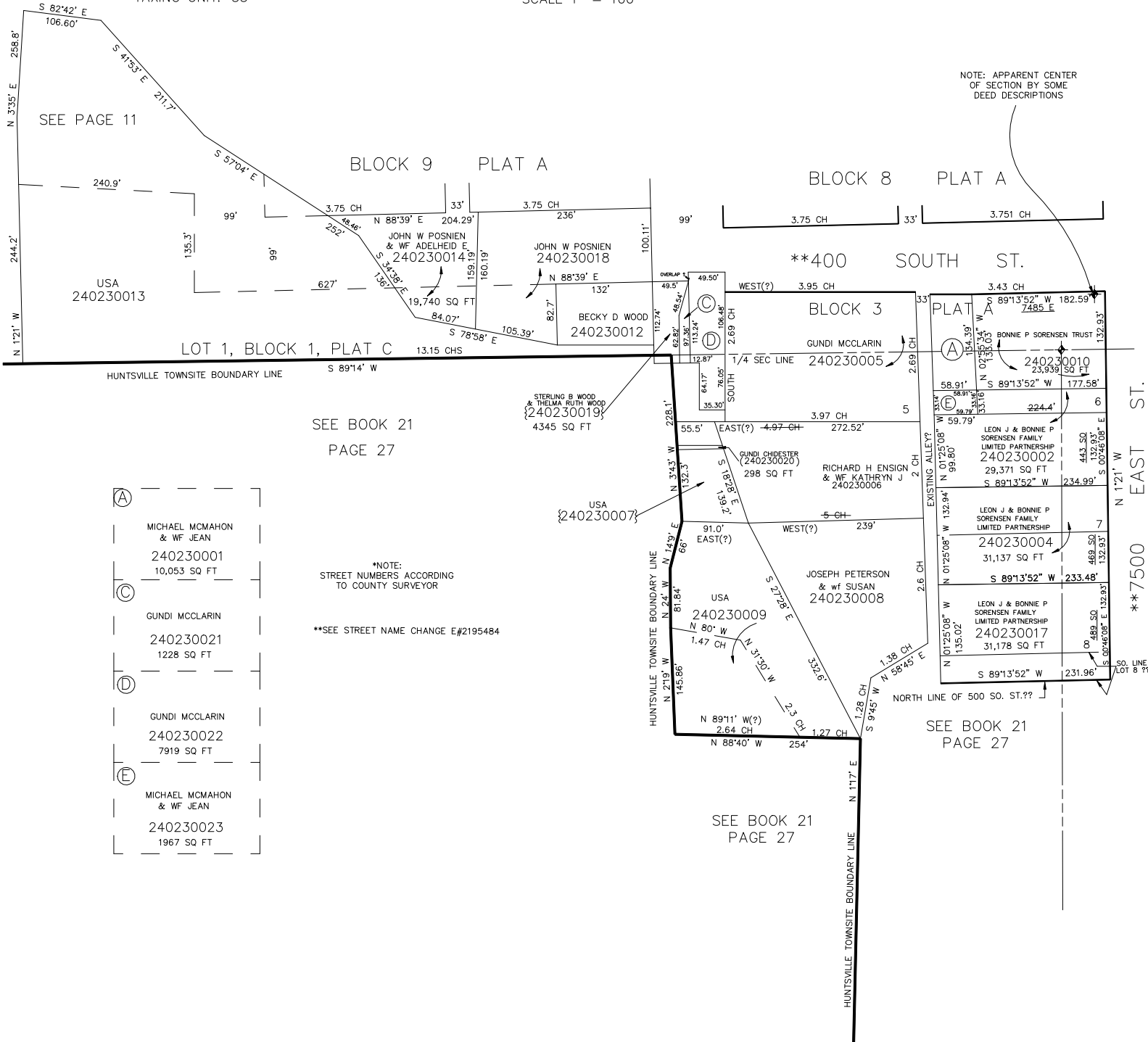


PART OF THE S 1/2
SECTION 18, T.6N., R.2E., S.L.B. & M.
& LOT 1, BLOCK 1, PLAT C & LOTS 5, 6, 7 & 8 BLK. 3, PLAT A

IN HUNTSVILLE TOWNSITE

SCALE 1" = 100'

TAXING UNIT: 35



NOTE: APPARENT CENTER OF SECTION BY SOME DEED DESCRIPTIONS

SEE PAGE 11

BLOCK 9 PLAT A

BLOCK 8 PLAT A

**400 SOUTH ST.

LOT 1, BLOCK 1, PLAT C

BLOCK 3 PLAT A

HUNTSVILLE TOWNSITE BOUNDARY LINE

SEE BOOK 21
PAGE 27

STERLING B WOOD & THELMA RUTH WOOD
{240230019}
4345 SQ FT

- (A) MICHAEL MCMAHON & WF JEAN
240230001
10,053 SQ FT
- (C) GUNDI MCCLARIN
240230021
1228 SQ FT
- (D) GUNDI MCCLARIN
240230022
7919 SQ FT
- (E) MICHAEL MCMAHON & WF JEAN
240230023
1967 SQ FT

*NOTE: STREET NUMBERS ACCORDING TO COUNTY SURVEYOR

**SEE STREET NAME CHANGE E#2195484

{240230007}

JOSEPH PETERSON & WF SUSAN
240230008

USA
240230009

SEE BOOK 21
PAGE 27

SEE BOOK 21
PAGE 27

**7500 EAST ST.